



---

# **Common Appropriation Structure**

## **FY19 Transition: Phase 1**

**Office of Resource Management (CG-83)**



# FY 19 CAS APPROPRIATIONS

---



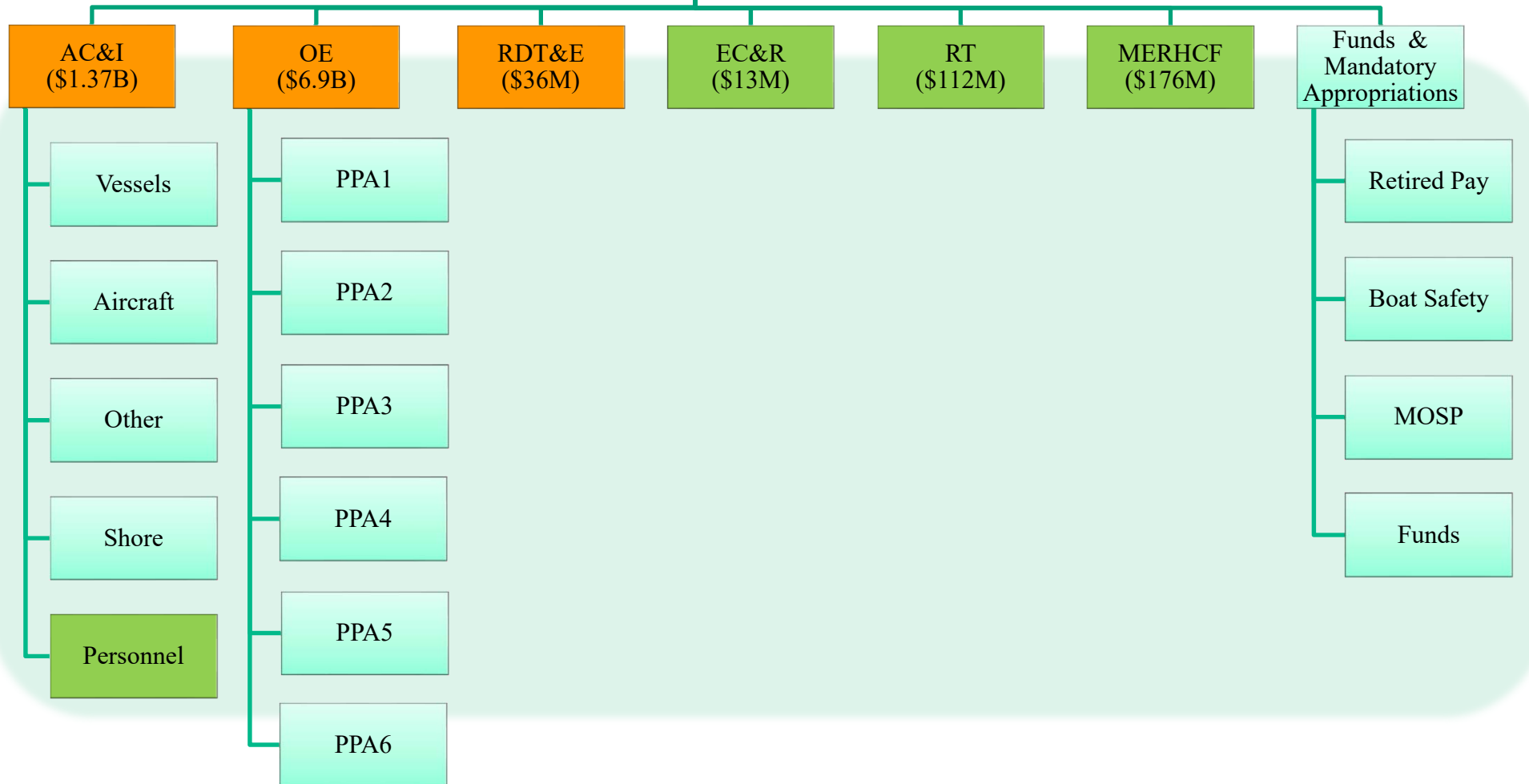
- **Research & Development (R&D):**
  - Based on CG RDT&E; 1-to-1 transition for CG
  - New for many DHS Components
- **Procurement, Construction, and Improvements (PC&I):**
  - Based on CG AC&I; nearly 1-to-1 transition for CG
  - Move AC&I personnel to O&S
- **Operations and Support (O&S):**
  - Based on CG OE;
  - Includes OE, EC&R, RT, & MERHCF, AC&I Personnel
- **Federal Assistance (FA):**
  - Allows for grants, loans, etc
  - CG: Only applies to Boating Safety
  - Included mostly to address FEMA grants



# CURRENT CG STRUCTURE



Appropriations





# FY19 CAS: PHASE 1



Appropriations

